

Cracking neural circuits in a tiny brain: new approaches for understanding the neural circuitry of *Drosophila*

Shawn R. Olsen and Rachel I. Wilson

Department of Neurobiology, Harvard Medical School, Boston, MA 02115, USA

Genetic screens in *Drosophila* have identified many genes involved in neural development and function. However, until recently, it has been impossible to monitor neural signals in *Drosophila* central neurons, and it has been difficult to make specific perturbations to central neural circuits. This has changed in the past few years with the development of new tools for measuring and manipulating neural activity in the fly. Here we review how these new tools enable novel conceptual approaches to ‘cracking circuits’ in this important model organism. We discuss recent studies aimed at defining the cognitive demands on the fly brain, identifying the cellular components of specific neural circuits, mapping functional connectivity in those circuits and defining causal relationships between neural activity and behavior.

What is circuit cracking?

The *Oxford English Dictionary* defines to *crack* as ‘to puzzle out, make out, solve, discuss.’ To completely solve a neural circuit would require

- (i) describing a behavior whose neural circuit mechanisms we seek to understand,
- (ii) identifying which neurons are involved,
- (iii) determining what drives activity in each type of neuron and how these signals are transformed through the circuit,
- (iv) discovering the cellular, synaptic and circuit mechanisms underlying these neural transformations
- (v) understanding why these neural transformations are useful intermediates in producing this behavior.

Why the fly?

Cracking every neural circuit in every species would be impossible and pointless. But a detailed comparison of several circuits in different species should help reveal what features of neural circuits are fundamental and which are specializations. Many (although not all) neuroscientists believe that some neural circuits in *Drosophila* are worth including in this research program.

The most obvious reason is the power of the *Drosophila* genetic toolbox. Mouse neurogenetic tools are beginning to rival those of the fly, however, and so this reason is no longer preeminent. A more basic reason is numerical sim-

ilarity: there are ~1000-fold fewer neurons in the brain of the fruit fly. Another advantage is the identified neuron – a stereotyped neuron that can be located (in theory) in every fly. Many *Drosophila* neurons are identifiable in this way. *Caenorhabditis elegans* is even simpler, and each of its 302 neurons is uniquely identifiable, but the behavioral repertoire of the worm is less extensive. Thus, the fly is a useful compromise between tractability and richness.

In this review, we have generally restricted our focus to studies published within the last four years. Several excellent reviews have summarized technical innovations in the genetic control of *Drosophila* neurons during this time period [1,2]. Here we instead examine how these tools succeed (and occasionally fail) in advancing the broad goal of understanding neural circuits. We also look critically at whether the anticipated power of this model system – to rapidly achieve complete understanding of a neural circuit – is currently realistic.

Defining the behavioral task

Circuit cracking generally begins with an observable behavior that we seek to understand. Classical *Drosophila* behavioral paradigms were designed to screen many flies simultaneously for profound defects, with the goal of isolating new genetic variants. But neuroscientists are increasingly interested in fly behavior for its own sake, rather than simply viewing it as a tool for isolating mutations [3].

Several recent behavioral studies have expanded our notion of the fly’s cognitive ability. For example, *Drosophila* can discriminate between subtly different abstract visual symbols, and can recognize a familiar object regardless of where in the visual field that object previously appeared [4–6]. Flies can also remember the spatial position of an object that has been removed from their environment [7]. They can detect tiny changes in odor concentration [8,9], and can integrate olfactory information with visual signals [10–13] or other olfactory cues [9,14]. A male can tell the difference between a virgin and non-virgin, and can learn to modify his courtship strategy after sexual rejection [15,16]. Females can discriminate between the courtship songs of males of different species [17,18]. Flies will fight over food or mates, and can learn to modify their fighting strategy based on past encounters [19]. None of the neural circuits mediating these behaviors are currently understood.

Behavioral observations can also reveal what algorithms might be used to accomplish a particular cognitive

Corresponding author: Wilson, R.I. (rachel_wilson@hms.harvard.edu)

task. This is useful because it constrains the underlying neural computations. For example, a recent study asked how flying flies discriminate between a dangerous object (like a predator or colliding fly) and an object that would make a good landing site [20]. Flies were tethered inside a controlled visual environment where they could beat their wings freely. When any small visual object was presented to a fly, it attempted to turn away by adjusting the relative movements of its two wings. However, a visual edge elicited the opposite reaction – an attempt to turn toward the edge. These results suggest that a fly might avoid collisions simply by avoiding any small object. This avoidance response is evidently suppressed by edges, which more likely correspond to safe landing sites. This simple algorithm suggests the existence of two opposing visuomotor computations.

The ultimate goal of many behavioral experiments is to establish a baseline for genetic manipulations. Because some neural mechanisms are only required within a limited performance regime, a systematic approach is more likely to reveal a phenotype. For example, one recent study used a novel visual motion stimulus to systematically probe motor responses to patterns of varying velocity, contrast, luminance, spatial density and coherence [21]. Different velocities evoked walking either toward or against the motion of the stimulus. Genetic manipulations revealed that some neurons in the optic lobe are selectively involved in one of these behaviors. Another recent study systematically explored how flies navigate along temperature gradients [22]. Flies were found to avoid both warm and cold extremes, preferring a narrow range of temperatures. Mutations in a Trp channel were found to selectively affect warmth avoidance, without affecting responses to cold. These sorts of studies are beginning to reveal that many behaviors are mediated by multiple neural circuits

acting in parallel, some with opposing effects. This is perhaps not surprising, but it implies that it might be unrealistic to expect to find a unitary neural circuit underlying any particular behavior.

What neurons are involved?

We have little notion of what neurons are involved in many fly behaviors. For example, we have no idea which neurons mediate somatosensory, gustatory or auditory behavior (except primary sensory cells and motoneurons). Although we know where the axons of the relevant primary sensory cells project, this does not make it trivial to find their postsynaptic targets. This is because the fly brain and thoracic ganglion are small (~200 microns) relative to the size of an individual fly neuron (which can have a dendritic arbor > 50 microns wide, and an axon > 100 microns long). This means that one neuron can reach across multiple brain regions (Figure 1). Additionally, neural somata are anatomically segregated from axons and dendrites: somata are restricted to the rind of the brain and thoracic ganglion, with axons and dendrites localized to the neuropil core of these structures. Thus, a neuron might have a dendrite or axon in one part of the brain, and a soma lying some distance away. Despite these difficulties, several complementary approaches hold some promise for identifying candidate cellular components of neural circuits in the fly.

Anatomical methods

In lucky cases, it can be possible to identify candidate cellular components of a circuit simply by visually screening Gal4 lines. The Gal4/UAS technique provides a way to drive ectopic gene expression in a genetically defined subpopulation of cells (see Refs [2,23] for reviews). When crossed to a green fluorescent protein (GFP) reporter line, a Gal4 line will sometimes label only a small number of

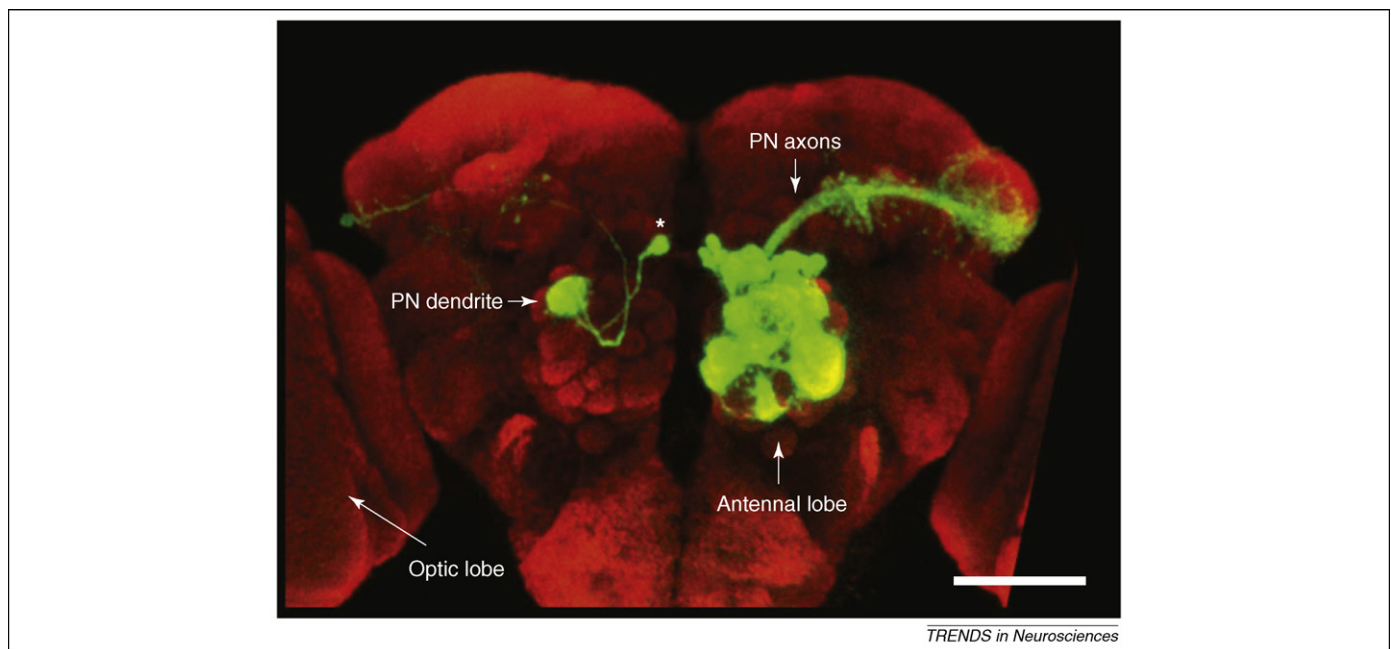


Figure 1. *Drosophila* neurons can span large distances in the brain. On the right hemisphere of the brain a large number of PNs are labeled with GFP. On the left hemisphere a single PN is labeled revealing both its dendritic and axonal morphology (the cell body is indicated by the asterisk). Note the large distance the axon traverses. The optic lobes from both hemispheres of the brain are cropped in this image. The scale bar corresponds to approximately 50 μm . The image is modified with permission from Ref. [100].

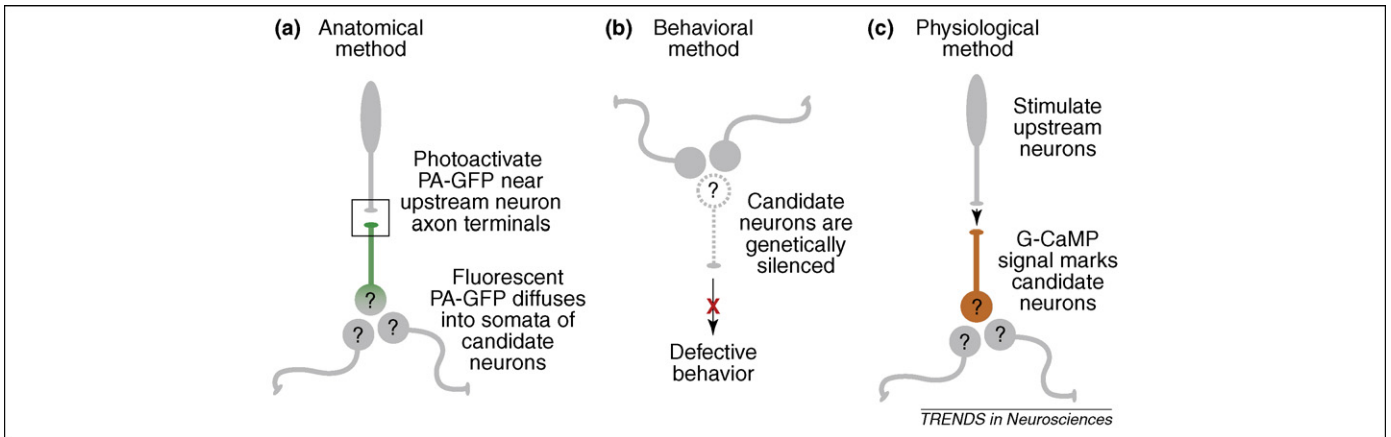


Figure 2. Strategies for identifying neurons in sensory and behavioral circuits. **(a)** A broadly expressed promoter is used to express PA-GFP in a large population of candidate neurons (labeled "?"). Photostimulation of the neuropil region containing the axons of known presynaptic neurons (box) increases PA-GFP fluorescence in the dendrites of postsynaptic neurons. Activated GFP molecules diffuse out of the dendrite and into the cell body, revealing the location of the somata of postsynaptic neurons. Recordings can be made from these neurons by using the GFP signal to target a patch electrode. **(b)** In this approach, many different Gal4 lines are used to express a silencing agent such as tetanus toxin. If a behavioral defect is observed, this indicates that the cells labeled by the Gal4 line were somehow involved in the behavior. The candidate neuron labeled "?" expresses the silencing agent. **(c)** All neurons express the calcium sensor G-CaMP, but only the connected neuron responds to stimulation of the upstream neuron.

neurons. Gal4 labeling can also be further restricted according to a neuron's lineage [24]. If the GFP-labeled neurons reside in a highly ordered brain region, their participation in a circuit can sometimes be obvious. This approach has been used to describe cellular components of three orderly circuits – the antennal lobe [25], mushroom body [25] and optic lobe [26,27].

However, if GFP labeling is widespread, or if the brain region of interest is disorderly, this approach is less useful. A new approach to this problem uses a genetically restricted form of targeted anatomical tracing [28]. Photoactivatable GFP is expressed under the control of either a pan-neuronal Gal4 line or a more restricted promoter. Photoactivation in a small region of neuropil can label all the neurons intersecting that region that express Gal4. For example, photoactivating a region where an axon tract terminates should label the dendrites of postsynaptic partners. Diffusion of photoactivated GFP out of these dendrites then labels the somata of the candidate cells (Figure 2a).

Finally, considerable effort has been directed at developing a transsynaptic tracer in *Drosophila*, but no generally useful tool has yet appeared. The problem stems from the vast evolutionary distance between flies and mammals: plant lectin and viral tracers that work well in mice are not necessarily useful in flies, probably because the relevant endogenous receptor mechanisms are lacking.

Behavioral methods

Historically, it has been more common to search for the genes rather than the neurons involved in a behavior. However, gene identification via mutant screens can also provide a handle for identifying neurons if the population of neurons expressing the gene is not too large or diverse. Cell-specific rescue experiments can be used to identify the specific set of neurons in which the functional gene is required for normal behavior. This method has been used to identify neurons involved in circadian rhythms [29], courtship [30], temperature regulation [22] and learning and memory [31].

A second of type of behavioral screen directly probes neurons rather than genes. In this screen, many candidate Gal4 lines are crossed with a UAS-transgene that silences neurons (either by blocking neurotransmitter release, inhibiting spiking or killing the cells), and progeny are screened for defective behaviors. The goal is to identify neurons that are required for the behavior (Figure 2b). A silencing screen should be particularly effective at identifying bottlenecks in a neural circuit (e.g. motorneurons). But if neural codes are distributed across large ensembles of central neurons, none of which are strictly required for behavioral performance, this approach might not yield a comprehensive set of important circuit elements. It will be interesting to see what kinds of neurons turn up in these screens. Only a few large-scale screens have been reported so far [21,32,33], but already some novel and intriguing circuit elements have emerged from these efforts.

One difficulty with this approach is the fact that many Gal4 lines label large and diverse sets of neurons. In this case, the number of neurons expressing the silencing UAS-transgene can be narrowed down using combinatorial methods for transgene expression (for details, see Ref. [34]). Additionally, a project is under way to produce an enhancer library of Gal4 lines that label relatively small subsets of neurons (~100) [35].

Physiological methods

A third approach is to use functional imaging. The idea is to express a fluorescent activity reporter (like G-CaMP) under the control of a pan-neuronal Gal4 line, or else a more restrictive Gal4 line arising from a screen. Imaging stimulus-evoked fluorescence in these flies should reveal all the (labeled) neurons that are activated by a particular stimulus (Figure 2c). However, the available genetically encoded activity sensors still lack sensitivity [36,37], meaning that this method will reveal only neurons with high firing rates. This method could also be useful in identifying neurons that are downstream from a genetically identified set of neurons. For this type of experiment, the sensory stimulus could be bypassed with a genetically

encoded stimulation tool such as channelrhodopsin that can be used to activate known upstream neurons while monitoring responses in downstream neurons.

Assigning function to neurons

Once neurons have been genetically identified, we face the challenge of understanding how information is represented by neural activity in this circuit, and how this activity reflects the computations being performed. Until recently, it was considered impossible to monitor neural signals in the *Drosophila* central nervous system *in vivo*. As a result, most studies have sought to reveal circuit function by inactivating or stimulating neurons of interest – that is, testing whether neurons are necessary and sufficient for a behavior. Now with the development of functional imaging and single-cell electrophysiology, we can also study how *Drosophila* neurons encode and process information.

Testing necessity and sufficiency

Demonstrating necessity generally involves silencing a particular neuron or group of neurons. If this disrupts behavioral performance, then the silenced neurons were somehow required. Neurons can be silenced by blocking neurotransmitter release [38], reducing intrinsic excitability [39] or by killing them with a neurotoxin or cell-death gene [40]. Techniques that permit fine temporal control [41,42] allow the question of necessity to be pinned to a specific point in time. Several recent studies have used this approach to ask whether candidate neurons are required for specific visual responses [27], courtship behaviors [43] and circadian rhythms [39,44], as well as hormonally driven events in late adult development [45].

Demonstrating sufficiency generally involves artificially triggering activity in a neuron or group of neurons, and asking whether this activity alone is adequate to recapitulate a behavior. If so, then these neurons (and their downstream effector circuits) are adequate to produce this behavior. Neural activity can be boosted by overexpressing sodium channels [46], although this approach lacks temporal control. Temporal specificity can be achieved by placing neural activity under the control of light [47–51] or under the control of an exogenous ligand-gated channel [52,53]. A different way to test sufficiency is to begin with a mutant fly having a behavioral defect, and then to rescue the defect by rescuing gene expression in a specific population of neurons [22,29–31].

Monitoring neural activity

Neurons rarely respond to only one stimulus and their responses are rarely binary. Thus, the question is not simply ‘Which neurons underlie a specific behavior?’, but rather ‘Which activity patterns produce this behavior?’ Answering this question requires measuring neural activity *in vivo*. Functional imaging and single-cell recordings are complementary tools for making such measurements.

The advantage of functional imaging is the ability to monitor the activity of many neurons simultaneously. Several genetically encoded fluorescent activity sensors have been developed in *Drosophila* [54,55], and permit

recording from genetically specified neurons. Of these, the most widely used is probably G-CaMP, which has a high signal-to-noise ratio. Functional imaging with G-CaMP has been used to examine the representation of odors and taste in the brain [40,56–59], and also to visualize memory-related representations in the mushroom bodies [60,61] and plasticity in the antennal lobes [62,63].

However, G-CaMP (and other genetically encoded calcium indicators) have some disadvantages, including limited sensitivity, small dynamic range and slow kinetics [36,37,64]. Also, the level of stimulus-evoked fluorescence in a neuron will depend on its Gal4 expression level. This limits quantitative comparisons between the responses of different neurons.

By comparison with functional imaging, the advantage of electrophysiology is the ability to monitor activity with high sensitivity and high temporal resolution. Recordings from *Drosophila* peripheral neurons can be performed extracellularly with fine tungsten or glass electrodes [65–68]. Extracellular recordings have been used to map the odor response profiles of most primary receptor neurons in the olfactory system of the *Drosophila* adult and larva [69,70]. In the *Drosophila* brain, extracellular currents are generally too small to be resolved, so recordings from central neurons are performed with a patch electrode at the soma in cell-attached or whole-cell mode. Recordings can be targeted to genetically specified neurons by marking these cells with a fluorescent protein. In the fly brain, whole-cell recordings have been used to map the receptive fields of both second- and third-order olfactory neurons [14,71–76]. Whole-cell recordings have also been used to characterize the receptive fields of visual neurons [77], and to probe circadian fluctuations in the intrinsic excitability of identified neurons [78].

A disadvantage of this approach is the inability to record from many neurons simultaneously. Moreover, whole-cell and cell-attached recordings are necessarily limited to neurons with large somata, although this limit is being pushed to ever-smaller cells [75,79].

An integrative approach

Necessity and sufficiency experiments help define causal relationships between neurons and behavior, but this kind of experiment can be difficult to interpret. Most tasks will probably involve neural activity patterns that are distributed across large populations of neurons. In a distributed neural representation, which elements can meaningfully be considered necessary or sufficient? The answer likely depends critically on the demands of the task, but measurements of neural activity provide useful clues. For example, consider a simple example from a recent study of olfactory behavior in *Drosophila* larvae [70]. Larvae are attracted to the odor ethyl acetate, and information about this odor is transduced by at least two different odor receptors. Depending on the concentration of ethyl acetate, either one of these receptors can be un/necessary or in/sufficient. This apparent inconsistency was resolved by asking how these two receptors respond to this odor. Electrophysiological measurements showed that one receptor has a higher affinity for ethyl acetate compared to the other. At low concentrations, the high-affinity receptor

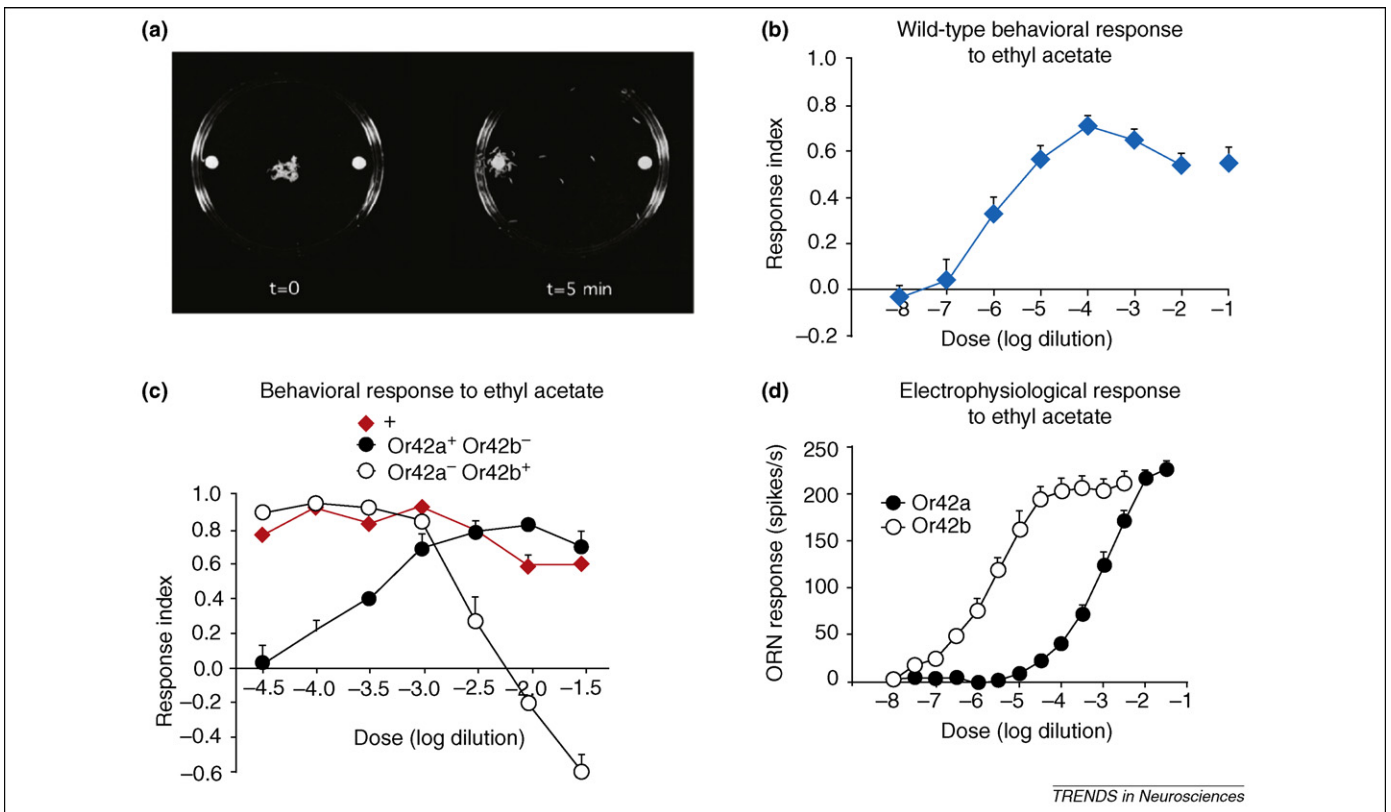


Figure 3. Monitoring neural activity helps interpret necessity and sufficiency experiments. **(a)** Assay for larval chemotaxis behavior. **(b)** Wild-type behavioral response to increasing concentrations of the odor ethyl acetate. The response index measures the degree of attractive behavior. Positive values indicate attraction and negative values indicate repulsion. **(c)** Comparison of behavioral responses between wild-type flies and two different odor receptor mutants, Or42a and Or42b. Wild-type flies display uniform attractive behavior to concentrations of ethyl acetate across four orders of magnitude. The odor receptor Or42b is necessary for attraction to low concentrations of ethyl acetate, but is unnecessary for high concentrations. The reverse is true for Or42a. **(d)** Electrophysiological analysis of olfactory receptor neurons (ORNs) expressing either Or42a or Or42b. Or42b is sensitive to changes in low concentrations of ethyl acetate but saturates at high concentrations. Or42a is only activated by high concentrations of ethyl acetate. Modified with permission from Ref. [70].

is necessary for ethyl acetate attraction, whereas the low-affinity receptor is dispensable. The reverse is true for the low-affinity receptor (Figure 3). This example shows how seemingly contradictory results can be obtained if the behavioral space is not probed in fine detail, and if the selectivity of the neurons encoding the information used for the behavior is not known. The difficulty in interpreting necessity and sufficiency experiments increases for more complex behaviors and more distributed neural representations. In this case, measurements of neural activity provide a context for effectively designing and interpreting these types of experiments.

Mechanisms of circuit processing

The next step is to uncover the synaptic and cellular mechanisms underlying sensorimotor transformations. This means mapping synaptic connectivity and investigating the functional properties of these connections.

The gold standard for demonstrating a synaptic connection is to directly visualize both pre- and postsynaptic specializations with electron microscopy. Systematic ultrastructural studies of the *Drosophila* brain are currently underway in several laboratories, but full 3D reconstructions of any brain region are probably not imminent. What is urgently needed is a high-throughput method for establishing whether two neurons are connected. A recent study in *C. elegans* describes a promising new strategy [80]. A pair of complementary GFP fragments is expressed in

different neurons, each tethered to the extracellular domain of a transmembrane carrier protein. In locations where the membranes of the two neurons are closely apposed, fluorescence is produced. When the GFP fragments are localized to synapses, this method is a reliable reporter of whether (and where) two neurons in the worm are synaptically connected.

Another litmus test for synaptic connectivity is electrophysiological: if one can demonstrate that a precisely timed depolarization of one neuron evokes a short-latency synaptic response in the other neuron, then a direct connection is unequivocal. Paired intracellular recordings are feasible [71] but heroic. It might be faster to perform a single intracellular recording while mapping candidate channelrhodopsin-expressing presynaptic inputs using brief localized pulses of light [81]. Electrophysiological approaches to mapping connectivity have the advantage of revealing some of the functional properties of the synaptic connections between neurons, including the relative strength of the synapse and whether it is inhibitory or excitatory. In the antennal lobe, a recent study explored the properties of the synaptic connection between olfactory receptor neurons and postsynaptic projection neurons, and found that the unique properties of this synapse help explain many features of projection neuron odor responses [82].

Genetic perturbation experiments can be coupled with physiological measurements to reveal the properties of the various synaptic inputs to a neuron. The logic of these

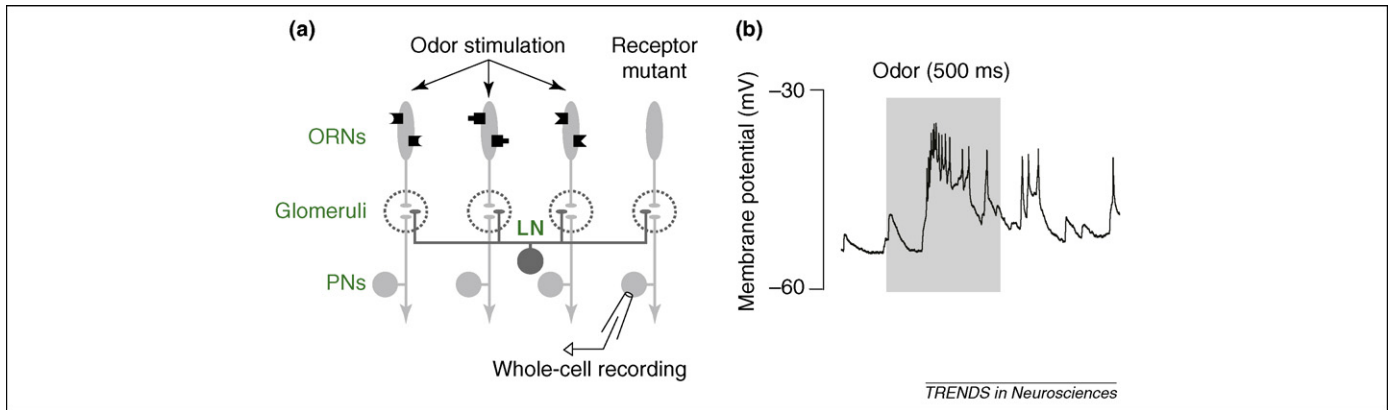


Figure 4. Functional dissection of synaptic inputs to a neuron. **(a)** Experimental design for silencing one synaptic input in order to reveal others. The odor receptor gene expressed in one particular type of olfactory receptor neuron (ORN) is mutated, and therefore these neurons do not respond to odors. A whole-cell recording is made from a projection neuron directly postsynaptic to the mutant ORNs. An odor is used to stimulate the remaining functional ORN types. Local neurons (LN) are anatomically poised to mediate communication between the glomerular compartments. **(b)** Example voltage trace from a PN postsynaptic to the silenced ORNs. Odor stimulation (gray bar) produces a depolarization leading to a train of spikes. Because this PN's direct presynaptic ORNs are silent, this excitation must derive from the activation of surrounding glomeruli, and therefore implicates local excitatory circuits in contributing to PN odor responses. (b) is modified with permission from Ref. [73].

experiments is to genetically silence or activate identified neuronal connections, and then measure the electrophysiological effects of this manipulation on the postsynaptic neurons. For example, in the antennal lobe, silencing the direct receptor neuron input to projection neurons has revealed the functional organization of local excitatory circuits in the antennal lobe (Figure 4) [73,74,83].

Local connections might actually be more difficult to map than long-range connections. There are almost no studies of local interneurons in the *Drosophila* brain. It seems likely that local interneurons are as numerous (and as important) as projection neurons, but almost nothing is known about them. The scale of the problem is suggested by a recent study documenting 22 morphological types of local interneurons in a single layer of the *Drosophila* optic lobe [26]. Are there recurring connectivity motifs [84] that tend to describe the interactions of local interneurons with projection neurons in different brain regions? Such general principles – if they exist – would simplify the challenge of local connectivity.

Another potential complication is that in an insect neuron, it is not unusual for pre- and postsynaptic machinery to be localized to the same axonal or dendritic compartment. For example, in the antennal lobe, the postsynaptic dendrites of projection neurons are actually sites of neurotransmitter release [71,85]. Additionally, the axon terminals of olfactory receptor neurons express GABA receptors that can inhibit neurotransmitter release [76]. Similarly, in the protocerebrum, the axons of lobula plate tangential cells are rich in neurotransmitter receptors [86]. To understand the microcircuitry of any particular region in the fly brain, it might be important to understand how pre- and postsynaptic proteins are segregated into different compartments of the same cell. Several laboratories have developed tagged pre- and postsynaptic markers that should make these experiments feasible [86,87], although the trafficking of overexpressed proteins should always be interpreted with caution.

Mathematical models of circuits and behavior

The final output of even small circuits represents a complex interplay between circuit elements. Mathematical

models can help reveal the logic of circuit operation by organizing anatomical and neurophysiological data, and can guide experimental studies by providing testable predictions about both neural activity and behavior. So far, *Drosophila* has inspired few modeling efforts, but studies in other relatively simple animals suggest ways in which these techniques might be useful. For example, models of central pattern generator circuits in the crustacean stomatogastric nervous system have helped define how dynamic motor patterns arise from simple circuits [88,89]. In *C. elegans*, quantitative models of chemotaxis behavior have suggested algorithms by which this behavior is produced, and have helped direct physiological investigation of the circuits performing these operations [90,91]. Likewise, analysis of visual motion processing in the blow fly have inspired mathematical models of specific neural computations [92]; the synaptic and cellular correlates of these computations can now be studied in *Drosophila* [77]. These studies illustrate how mathematical models can be helpful in understanding the relationship between circuits, computation and behavior.

Limitations of the model organism

The virtues of *Drosophila* as a model for systems neuroscience are easy to grasp. However, the limitations of this model organism receive less public attention. Some of these limitations might be swept aside by future breakthroughs, but others might be intrinsic to the fly.

One problem is that the small size of the *Drosophila* brain will make it extremely challenging to perform electrophysiological measurements in the behaving fly. Functional imaging might offer a solution to this problem, but imaging is even more sensitive than electrophysiology to movements of the preparation. Because neural circuits can be highly stereotyped in the fly (see e.g. Ref. [25] for a review), we should be able to learn an enormous amount simply by correlating neural activity in one individual fly with the behavior of a different individual. However, without simultaneous measurements, it will not be possible to correlate trial-to-trial fluctuations in neural activity with variations in behavioral performance.

We should also consider whether the fly is a good model for studying how neural activity sculpts neural circuits, especially during development. Certainly flies do learn, and this learning must correspond to experience-dependent changes somewhere in the nervous system. But connectivity in many fly neural circuits might be completely determined by innate factors. This idea is supported by several studies in the olfactory system which demonstrate that activity plays no discernable role in instructing connectivity [93–98]. The ‘hard-wired’ nature of the fly brain might limit our ability to generalize our findings to more plastic brains. One recent study, however, provides some evidence that local connectivity in the antennal lobe might be activity dependent [62].

To a large extent, the motivation for circuit analysis of fly behavior is based on the promise of rapid progress and complete understanding. It is worth keeping in mind that there might be circuits in the fly brain that are more difficult to crack than others. For some circuits, a slow rate of advancement might be justified by the insight that will ultimately be gained, perhaps through a comparative analysis of similar systems across animals; for others, it might be wiser to take a more opportunistic approach in another model organism.

Finally, we might consider how much circuits in a simple brain can really teach us about circuits in a big brain. Perhaps the sheer volume of synapses in the human cortex produces a kind of magic which cannot occur in a radically simpler brain. If so, the cognitive limitations of the fly might prove as interesting as its capabilities.

In summary, *Drosophila* displays complex behaviors but accomplishes this with relatively few neurons. The confluence of genetic tools for mapping circuits and perturbing neurons, along with the ability to record neural activity, means that a relatively complete understanding of some circuits is likely feasible in less than ten years. This would be a real achievement: at the very least, it would suggest how larger brains (and even robotic devices [99]) might implement these computations. Whether many *Drosophila* circuits can be cracked in this way, and whether fly circuits bear a fundamental resemblance to vertebrate neural circuits – only time will tell.

Acknowledgements

The Wilson laboratory is supported by grants from the NIH (1R01DC008174-01), a Pew Scholar Award, a McKnight Scholar Award, a Sloan Foundation Research Fellowship and Beckman Young Investigator Award (to R.I.W.).

References

- Holmes, T.C. *et al.* (2007) Circuit-breaking and behavioral analysis by molecular genetic manipulation of neural activity in *Drosophila*. In *Invertebrate Neurobiology* (North, G. and Greenspan, R.J., eds), pp. 19–52, Cold Spring Harbor Laboratory Press
- Luo, L. *et al.* (2008) Genetic dissection of neural circuits. *Neuron* 57, 634–660
- Choe, K.M. and Clandinin, T.R. (2005) Thinking about visual behavior: learning about photoreceptor function. *Curr. Top. Dev. Biol.* 69, 187–213
- Heisenberg, M. (1995) Pattern recognition in insects. *Curr. Opin. Neurobiol.* 5, 475–481
- Tang, S. *et al.* (2004) Visual pattern recognition in *Drosophila* is invariant for retinal position. *Science* 305, 1020–1022
- Liu, G. *et al.* (2006) Distinct memory traces for two visual features in the *Drosophila* brain. *Nature* 439, 551–556
- Neuser, K. *et al.* (2008) Analysis of a spatial orientation memory in *Drosophila*. *Nature* 453, 1244–1247
- Louis, M. *et al.* (2008) Bilateral olfactory sensory input enhances chemotaxis behavior. *Nat. Neurosci.* 11, 187–199
- Faucher, C. *et al.* (2006) Behavioral responses of *Drosophila* to biogenic levels of carbon dioxide depend on life-stage, sex and olfactory context. *J. Exp. Biol.* 209, 2739–2748
- Frye, M.A. and Dickinson, M.H. (2004) Motor output reflects the linear superposition of visual and olfactory inputs in *Drosophila*. *J. Exp. Biol.* 207, 123–131
- Guo, J. and Guo, A. (2005) Crossmodal interactions between olfactory and visual learning in *Drosophila*. *Science* 309, 307–310
- Chow, D.M. and Frye, M.A. (2008) Context-dependent olfactory enhancement of optomotor flight control in *Drosophila*. *J. Exp. Biol.* 211, 2478–2485
- Duistermars, B.J. and Frye, M.A. (2008) Crossmodal visual input for odor tracking during fly flight. *Curr. Biol.* 18, 270–275
- Schlief, M.L. and Wilson, R.I. (2007) Olfactory processing and behavior downstream from highly selective receptor neurons. *Nat. Neurosci.* 10, 623–630
- Ejima, A. *et al.* (2005) Sequential learning of pheromonal cues modulates memory consolidation in trainer-specific associative courtship conditioning. *Curr. Biol.* 15, 194–206
- Ejima, A. *et al.* (2007) Generalization of courtship learning in *Drosophila* is mediated by *cis*-vaccenyl acetate. *Curr. Biol.* 17, 599–605
- Bennet-Clark, H.C. and Ewing, A.W. (1970) The love song of the fruit fly. *Sci. Am.* 223, 85–90
- Ritchie, M.G. *et al.* (1999) *Drosophila* song as a species-specific mating signal and the behavioural importance of Kyriacou & Hall cycles in *D. melanogaster* song. *Anim. Behav.* 58, 649–657
- Yurkovic, A. *et al.* (2006) Learning and memory associated with aggression in *Drosophila melanogaster*. *Proc. Natl. Acad. Sci. U. S. A.* 103, 17519–17524
- Maimon, G. *et al.* (2008) A simple vision-based algorithm for decision making in flying *Drosophila*. *Curr. Biol.* 18, 464–470
- Katsov, A. and Clandinin, T.R. (2008) Motion processing streams in *Drosophila* are behaviorally specialized. *Neuron* 59, 322–335
- Hamada, F.N. *et al.* (2008) An internal thermal sensor controlling temperature preference in *Drosophila*. *Nature* 454, 217–220
- Phelps, C.B. and Brand, A.H. (1998) Ectopic gene expression in *Drosophila* using GAL4 system. *Methods* 14, 367–379
- Lee, T. and Luo, L. (1999) Mosaic analysis with a repressible cell marker for studies of gene function in neuronal morphogenesis. *Neuron* 22, 451–461
- Jefferis, G.S. *et al.* (2002) Development of neuronal connectivity in *Drosophila* antennal lobes and mushroom bodies. *Curr. Opin. Neurobiol.* 12, 80–86
- Morante, J. and Desplan, C. (2008) The color vision circuit in the medulla of *Drosophila*. *Curr. Biol.* 18, 553–565
- Rister, J. *et al.* (2007) Dissection of the peripheral motion channel in the visual system of *Drosophila melanogaster*. *Neuron* 56, 155–170
- Datta, S.R. *et al.* (2008) The *Drosophila* pheromone cVA activates a sexually dimorphic neural circuit. *Nature* 452, 473–477
- Nitabach, M.N. and Taghert, P.H. (2008) Organization of the *Drosophila* circadian control circuit. *Curr. Biol.* 18, R84–R93
- Stockinger, P. *et al.* (2005) Neural circuitry that governs *Drosophila* male courtship behavior. *Cell* 121, 795–807
- Davis, R.L. (2005) Olfactory memory formation in *Drosophila*: from molecular to systems neuroscience. *Annu. Rev. Neurosci.* 28, 275–302
- Baker, D.A. *et al.* (2007) Functional dissection of the neural substrates for gravitaxic maze behavior in *Drosophila melanogaster*. *J. Comp. Neurol.* 501, 756–764
- Gordon, M.D. *et al.* (2008) Fly neurobiology: development and function of the brain. Meeting on the Neurobiology of *Drosophila*. *EMBO Rep.* 9, 239–242
- Luan, H. and White, B.H. (2007) Combinatorial methods for refined neuronal gene targeting. *Curr. Opin. Neurobiol.* 17, 572–580
- Pfeiffer, B.D. *et al.* (2008) Tools for neuroanatomy and neurogenetics in *Drosophila*. *Proc. Natl. Acad. Sci. U. S. A.* 105, 9715–9720

- 36 Mao, T. *et al.* (2008) Characterization and subcellular targeting of GCaMP-type genetically-encoded calcium indicators. *PLoS ONE* 3, e1796
- 37 Jayaraman, V. and Laurent, G. (2007) Evaluating a genetically encoded optical sensor of neural activity using electrophysiology in intact adult fruit flies. *Front. Neural Circuits* 10.3389/neuro.04.003.2007 (<http://frontiersin.org/neuralcircuits>)
- 38 Sweeney, S.T. *et al.* (1995) Targeted expression of tetanus toxin light chain in *Drosophila* specifically eliminates synaptic transmission and causes behavioral defects. *Neuron* 14, 341–351
- 39 Nitabach, M.N. *et al.* (2002) Electrical silencing of *Drosophila* pacemaker neurons stops the free-running circadian clock. *Cell* 109, 485–495
- 40 Wang, Z. *et al.* (2004) Taste representations in the *Drosophila* brain. *Cell* 117, 981–991
- 41 Kitamoto, T. (2001) Conditional modification of behavior in *Drosophila* by targeted expression of a temperature-sensitive shibire allele in defined neurons. *J. Neurobiol.* 47, 81–92
- 42 Zhang, F. *et al.* (2007) Multimodal fast optical interrogation of neural circuitry. *Nature* 446, 633–639
- 43 Sakai, T. and Kitamoto, T. (2006) Differential roles of two major brain structures, mushroom bodies and central complex, for *Drosophila* male courtship behavior. *J. Neurobiol.* 66, 821–834
- 44 Joiner, W.J. *et al.* (2006) Sleep in *Drosophila* is regulated by adult mushroom bodies. *Nature* 441, 757–760
- 45 Luan, H. *et al.* (2006) Functional dissection of a neuronal network required for cuticle tanning and wing expansion in *Drosophila*. *J. Neurosci.* 26, 573–584
- 46 Nitabach, M.N. *et al.* (2006) Electrical hyperexcitation of lateral ventral pacemaker neurons desynchronizes downstream circadian oscillators in the fly circadian circuit and induces multiple behavioral periods. *J. Neurosci.* 26, 479–489
- 47 Schroll, C. *et al.* (2006) Light-induced activation of distinct modulatory neurons triggers appetitive or aversive learning in *Drosophila* larvae. *Curr. Biol.* 16, 1741–1747
- 48 Zhang, W. *et al.* (2007) A toolbox for light control of *Drosophila* behaviors through Channelrhodopsin 2-mediated photoactivation of targeted neurons. *Eur. J. Neurosci.* 26, 2405–2416
- 49 Hwang, R.Y. *et al.* (2007) Nociceptive neurons protect *Drosophila* larvae from parasitoid wasps. *Curr. Biol.* 17, 2105–2116
- 50 Suh, G.S. *et al.* (2007) Light activation of an innate olfactory avoidance response in *Drosophila*. *Curr. Biol.* 17, 905–908
- 51 Clyne, J.D. and Miesenbock, G. (2008) Sex-specific control and tuning of the pattern generator for courtship song in *Drosophila*. *Cell* 133, 354–363
- 52 Lima, S.Q. and Miesenbock, G. (2005) Remote control of behavior through genetically targeted photostimulation of neurons. *Cell* 121, 141–152
- 53 Marella, S. *et al.* (2006) Imaging taste responses in the fly brain reveals a functional map of taste category and behavior. *Neuron* 49, 285–295
- 54 Griesbeck, O. (2004) Fluorescent proteins as sensors for cellular functions. *Curr. Opin. Neurobiol.* 14, 636–641
- 55 Miesenbock, G. and Kevrekidis, I.G. (2005) Optical imaging and control of genetically designated neurons in functioning circuits. *Annu. Rev. Neurosci.* 28, 533–563
- 56 Wang, J.W. *et al.* (2003) Two-photon calcium imaging reveals an odor-evoked map of activity in the fly brain. *Cell* 112, 271–282
- 57 Wang, Y. *et al.* (2004) Stereotyped odor-evoked activity in the mushroom body of *Drosophila* revealed by green fluorescent protein-based Ca²⁺ imaging. *J. Neurosci.* 24, 6507–6514
- 58 Fischler, W. *et al.* (2007) The detection of carbonation by the *Drosophila* gustatory system. *Nature* 448, 1054–1057
- 59 Silbering, A.F. and Galizia, C.G. (2007) Processing of odor mixtures in the *Drosophila* antennal lobe reveals both global inhibition and glomerulus-specific interactions. *J. Neurosci.* 27, 11966–11977
- 60 Yu, D. *et al.* (2006) *Drosophila* $\alpha\beta$ mushroom body neurons form a branch-specific, long-term cellular memory trace after spaced olfactory conditioning. *Neuron* 52, 845–855
- 61 Yu, D. *et al.* (2005) *Drosophila* DPM neurons form a delayed and branch-specific memory trace after olfactory classical conditioning. *Cell* 123, 945–957
- 62 Sachse, S. *et al.* (2007) Activity-dependent plasticity in an olfactory circuit. *Neuron* 56, 838–850
- 63 Yu, D. *et al.* (2004) Altered representation of the spatial code for odors after olfactory classical conditioning; memory trace formation by synaptic recruitment. *Neuron* 42, 437–449
- 64 Pologruto, T.A. *et al.* (2004) Monitoring neural activity and [Ca²⁺] with genetically encoded Ca²⁺ indicators. *J. Neurosci.* 24, 9572–9579
- 65 Ikeda, K. and Kaplan, W.D. (1970) Patterned neural activity of a mutant *Drosophila melanogaster*. *Proc. Natl. Acad. Sci. U. S. A.* 66, 765–772
- 66 Fujishiro, N. *et al.* (1984) Impulse frequency and action potential amplitude in labellar chemosensory neurones of *Drosophila melanogaster*. *J. Insect Physiol.* 30, 317–325
- 67 Corfas, G. and Dudai, Y. (1990) Adaptation and fatigue of a mechanosensory neuron in wild-type *Drosophila* and in memory mutants. *J. Neurosci.* 10, 491–499
- 68 Clyne, P. *et al.* (1997) Odorant response of individual sensilla on the *Drosophila* antenna. *Invert. Neurosci.* 3, 127–135
- 69 Hallem, E.A. and Carlson, J.R. (2006) Coding of odors by a receptor repertoire. *Cell* 125, 143–160
- 70 Kreher, S.A. *et al.* (2008) Translation of sensory input into behavioral output via an olfactory system. *Neuron* 59, 110–124
- 71 Wilson, R.I. *et al.* (2004) Transformation of olfactory representations in the *Drosophila* antennal lobe. *Science* 303, 366–370
- 72 Bhandawat, V. *et al.* (2007) Sensory processing in the *Drosophila* antennal lobe increases the reliability and separability of ensemble odor representations. *Nat. Neurosci.* 10, 1474–1482
- 73 Olsen, S.R. *et al.* (2007) Excitatory interactions between olfactory processing channels in the *Drosophila* antennal lobe. *Neuron* 54, 89–103
- 74 Root, C.M. *et al.* (2007) Propagation of olfactory information in *Drosophila*. *Proc. Natl. Acad. Sci. U. S. A.* 104, 11826–11831
- 75 Turner, G.C. *et al.* (2007) Olfactory representations by *Drosophila* mushroom body neurons. *J. Neurophysiol.* 99, 734–746
- 76 Olsen, S.R. and Wilson, R.I. (2008) Lateral presynaptic inhibition mediates gain control in an olfactory circuit. *Nature* 452, 956–960
- 77 Joesch, M. *et al.* (2008) Response properties of motion-sensitive visual interneurons in the lobula plate of *Drosophila melanogaster*. *Curr. Biol.* 18, 368–374
- 78 Sheeba, V. *et al.* (2007) Circadian- and light-dependent regulation of resting membrane potential and spontaneous action potential firing of *Drosophila* circadian pacemaker neurons. *J. Neurophysiol.* 99, 976–988
- 79 Gu, H. and O'Dowd, D.K. (2006) Cholinergic synaptic transmission in adult *Drosophila* Kenyon cells *in situ*. *J. Neurosci.* 26, 265–272
- 80 Feinberg, E.H. *et al.* (2008) GFP Reconstitution across Synaptic Partners (GRASP) defines cell contacts and synapses in living nervous systems. *Neuron* 57, 353–363
- 81 Petreanu, L. *et al.* (2007) Channelrhodopsin-2-assisted circuit mapping of long-range callosal projections. *Nat. Neurosci.* 10, 663–668
- 82 Kazama, H. and Wilson, R.I. (2008) Homeostatic matching and nonlinear amplification at identified central synapses. *Neuron* 58, 401–413
- 83 Shang, Y. *et al.* (2007) Excitatory local circuits and their implications for olfactory processing in the fly antennal lobe. *Cell* 128, 601–612
- 84 Milo, R. *et al.* (2002) Network motifs: simple building blocks of complex networks. *Science* 298, 824–827
- 85 Ng, M. *et al.* (2002) Transmission of olfactory information between three populations of neurons in the antennal lobe of the fly. *Neuron* 36, 463–474
- 86 Raghu, S.V. *et al.* (2007) Synaptic organization of lobula plate tangential cells in *Drosophila*: γ -aminobutyric acid receptors and chemical release sites. *J. Comp. Neurol.* 502, 598–610
- 87 Estes, P.S. *et al.* (2000) Synaptic localization and restricted diffusion of a *Drosophila* neuronal synaptobrevin–green fluorescent protein chimera *in vivo*. *J. Neurogenet.* 13, 233–255
- 88 Soto-Trevino, C. *et al.* (2001) Activity-dependent modification of inhibitory synapses in models of rhythmic neural networks. *Nat. Neurosci.* 4, 297–303
- 89 Nusbaum, M.P. and Beenhakker, M.P. (2002) A small-systems approach to motor pattern generation. *Nature* 417, 343–350
- 90 Ferree, T.C. and Lockery, S.R. (1999) Computational rules for chemotaxis in the nematode *C. elegans*. *J. Comput. Neurosci.* 6, 263–277

- 91 Suzuki, H. *et al.* (2008) Functional asymmetry in *Caenorhabditis elegans* taste neurons and its computational role in chemotaxis. *Nature* 454, 114–117
- 92 Borst, A. and Haag, J. (2002) Neural networks in the cockpit of the fly. *J. Comp. Physiol. A Neuroethol. Sens. Neural Behav. Physiol.* 188, 419–437
- 93 Wong, A.M. *et al.* (2002) Spatial representation of the glomerular map in the *Drosophila* protocerebrum. *Cell* 109, 229–241
- 94 Dobritsa, A.A. *et al.* (2003) Integrating the molecular and cellular basis of odor coding in the *Drosophila* antenna. *Neuron* 37, 827–841
- 95 Tanaka, N.K. *et al.* (2004) Integration of chemosensory pathways in the *Drosophila* second-order olfactory centers. *Curr. Biol.* 14, 449–457
- 96 Berdnik, D. *et al.* (2006) Wiring stability of the adult *Drosophila* olfactory circuit after lesion. *J. Neurosci.* 26, 3367–3376
- 97 Hiesinger, P.R. *et al.* (2006) Activity-independent prespecification of synaptic partners in the visual map of *Drosophila*. *Curr. Biol.* 16, 1835–1843
- 98 Ting, C.Y. and Lee, C.H. (2007) Visual circuit development in *Drosophila*. *Curr. Opin. Neurobiol.* 17, 65–72
- 99 Webb, B. (2002) Robots in invertebrate neuroscience. *Nature* 417, 359–363
- 100 Jefferis, G.S. *et al.* (2001) Target neuron prespecification in the olfactory map of *Drosophila*. *Nature* 414, 204–208